

# BUSHWACK BULLETIN

The BUSHWACK BULLETIN is published quarterly in the months of February, May, August and November by the Susquehanna Appalachian Trail Club, Inc. (SATC) P.O. Box 61001, Harrisburg, PA 17106-1001.

*A Hiking Publication For The Harrisburg Area*

Volume 57– No. 1  
March – May 2011

Web Site: [www.satc-hike.org](http://www.satc-hike.org)  
Email: [hike-hbg@satc-hike.org](mailto:hike-hbg@satc-hike.org)

Our Objectives: Group Hiking + Trail Maintenance + Outdoor Recreation

**Next *Bushwack Bulletin* Deadline for Submissions: May 6, 2011**

**Mail to:** Editor Bushwack Bulletin, S.A.T.C., P.O. Box 61001, Harrisburg, PA 17106-1001

**E-mail:** [Bushwack@SATC-hike.org](mailto:Bushwack@SATC-hike.org)

## Officers

*President*  
Karen Balaban

*Vice President*  
**Vacant**

*Secretary*  
Tara Shade

*Treasurer*  
Rick Sis

*Immediate Past-President*  
Barbara Harvey

*Directors - Class of 2011*  
Craig Barnhart  
John O'Day  
Nancy Stawitz

*Directors - Class of 2012*  
Gail Brossman  
Laura Rhoads  
Rob Shaw

## Inside this Issue

Acknowledgments ..... 2 - 3

***Annual Banquet – Friday March 25<sup>th</sup>*** ..... 15

Appalachian Trail Conservancy (ATC) Biennial Conference .....16

A.T. Museum ..... 16

CPC Ironmaster's Mansion ..... 14

Hiking & Event Schedule ..... 7-12

Keystone Trails Association (KTA) News ..... 18

March for the Mansion registration form ..... 17

Membership Application / Renewal / Banquet Reservation..... 19

President's Message ..... 2

**SATC News** ..... 3 - 6

And lots more .....

**Renew your membership now. (See p. 19) Membership year ends 3/31/2011.**

And it's never too late to switch to receiving the *Bushwack Bulletin* electronically, arriving at least 1 week earlier than snail mail, plus the (almost) weekly **SATC Trail Mail** bonus. Contact [Bushwack@SATC-hike.org](mailto:Bushwack@SATC-hike.org)

**SATC is a 501(c)(3) non-profit corporation organized in 1954; membership contributions and additional donations are tax-deductible as a charitable contribution. To make a donation or renew your membership see p. 19.**

### **Spring-thaw greetings!**

.... at least I hope it is - SOON! The cold weather did not eliminate hiking opportunities, but snow and ice sure made it difficult to find parking along the trail head and not get stuck.

The **SATC** Board of Directors had a very productive retreat in January. Work flow and division of duties were flushed out. Revised **SATC** policies and procedures have been adopted as have the duties of the officers and directors. The Board is now focusing on updating committee descriptions. A Hospitality Committee and a Program Committee have been created (see p. 5) to alleviate some responsibilities from the vice-president. This means there are “more bites to chew” (i.e. committees), but at least they are smaller and less burdensome. I hope it encourages you to join a committee.

With spring approaching, **SATC** will have a changing of the guard. There will be 3 new directors. (see p. 4). Special thanks to Lorrie Preston and her crew for their recruiting efforts. However, they are not done. There is still that ever elusive VP position to fill. With a better defined delineation of duties among the Board and committees, the VP will experience a much easier transition into the office of president. Lorrie, her committee, and I are excited to discuss the integral role of the VP with all curious onlookers.

Please join me in thanking John O’Day, Craig Barnhart, and Nancy Stawitz for their service on the Board. You can express your gratitude at the annual banquet on March 25<sup>th</sup> (see p. 15), while at the same time voting for their successors. Don’t miss the presentation on the CCC. I saw it at a KTA meeting and it was excellent - a lot of history and great photos - you’ll learn a lot about Pennsylvania’s contributions.

**SATC**’s annual hike leader training and hiking safely program is scheduled for Saturday April 2<sup>nd</sup> (see the schedule on p. 9). Even if you do not intend to lead a hike, some great tips will be offered to keep your hike safe and to make your outdoor experience a pleasant one. This is the last hurrah for hiking committee chairs Nancy Stawitz and Craig Barnhart. If you’d like **SATC** to continue its fulsome list of hikes and activities, please contact them about chairing this core committee this year.

Have you been to the **SATC** website lately ([hike-hbr@SATC-hike.org](mailto:hike-hbr@SATC-hike.org))? Thanks to Perry Ligon, **SATC** has a vibrant presence on Facebook. And for those of you who do not receive **SATC Trail Mail**, you’ll be able to enjoy some of the tidbits shared weekly with subscribers.

Finally, there is a host of activities on the horizon - The Ironmaster’s Challenge (p. 14), March for the Mansion (p. 17), A.T. Museum programs, ATC Conference, etc. - hardly enough weekends in the summer to absorb them all. So no excuses: get off that couch and leave no hiking boots inside!

*Karen*

[KMBalaban@BalabanLLC.com](mailto:KMBalaban@BalabanLLC.com)

### **Welcome New Members**

Jennifer Brossman  
Dabis Camero  
Marie Helmond &  
Kevin Dealy  
Prudence Reichart  
Anne Townsend

### **Special Financial Contributions**

Glenn & Susan Cunningham, David Cullen, Carolyn Hoffman,  
Bruce & Jody Koenecke

**Hike Leaders (Dec Jan Feb)** Lorrie Preston, Sharon Shellenberger, Janet Eshleman, Craig Barnhart, Nancy Stawitz, Susanne Donmoyer, Karen Balaban, Laura Sheely, Sam and Barb Harvey, Frank Bohn, Trisha Sanders, Tara Shade, Jeff Buehler, Phil Day, Jeff Willard, Jim Foster



### **SATC Appalachian Trail Hiker**

**John Kelley** (NOBO): start 4/19/2007 -- finish 8/28/2010

John has offered to help anyone with planning an A.T. thru or section hike. He’s seen it all – even experienced 8 days with an IV drip to treat an infection resulting from a bad toe blister. Contact John at [kellyjohn7@aol.com](mailto:kellyjohn7@aol.com)



**Unsung Heroes** Paul Wummer (e-mail address book & *SATC Trail Mail* submission); Ilse Heine (database manager), John O'Day (database audit and member directory), Phil Day (ATC-MARO rep and chairman), Don Muth (2006 -07 Audit), Rob Shaw (2007 -08 financial review), Marty Gruver (Peters Mtn parking lot steward), Miles Newman (Peters Mtn shelter manager), Jeff Willard (*SATC Trail Mail* submission), Perry Ligon (SATC Facebook administrator), Lorrie Preston & Tara Shade (*Bushwack Bulletin* articles), Pete Fleszar (SATC webmaster)

**Holiday Party** Thanks to the following members who baked and/or donated the turkeys and hams for the Holiday Party: Karen Balaban, Sally Brossman, Sharon Shellenberger, Jim Stickney and Jeff Willard.

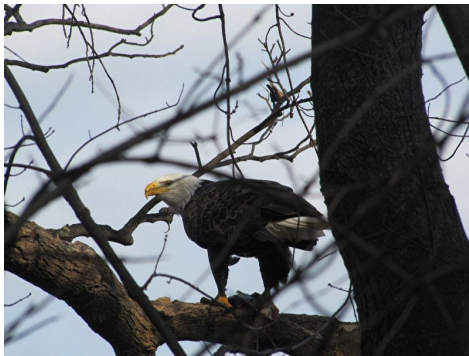
(\*Please check the meat fork that you took home after the Holiday Party. If it isn't yours, please contact Gail Brossman (766-1982). She has yours and would like hers back.)

**Trail Work Crew (November, December, January)** Tim Bachmann, Karen Balaban, Leo Boyer, Gail Brossman, Sally Brossman, Jeff Buehler, Carol Crum, Phil Day, George Garbarino, Anne Holly, Bill Holly, Fred Kling, Gary LaBelle, Bob Nicolodi, Tom Scully, Jeff Willard, Lisa Williamson.

**Nominating Committee** Lorrie Preston (Chair), Mike Barlup, Dick Martin

### **Bald Eagles Galore On Conowingo Dam Hike** By Lorrie Preston

Ten **SATC** members set out for a trip to Conowingo Dam on the Susquehanna River in Maryland on December 3rd with the goal of observing our country's national bird, the Bald Eagle. Bald eagles and many other fish-eating birds congregate in large numbers at the dam each winter because the water flowing through the dam keeps the river free of ice, providing an open food source during the cold season.



Arriving at the dam on a delightfully sunny but chilly day, we found the river running very high and many of the flood gates were wide open, allowing large quantities of water from the previous day's heavy rains to flow swiftly down the river. A cloud of water droplets captured the sunlight, casting a large colorful

rainbow above the river while the water burst forth. Within minutes of our arrival, we saw our first eagles in trees above the parking lot and roosting on the huge transmission towers on the island just below the dam.

It is always best when visiting Conowingo Dam to bring binoculars for up-close detail, but most days during the winter you will find birders with large scopes set up along the river. They are usually more than happy to talk with visitors about what kinds of birds they are seeing and will allow you to take a peek through their expensive equipment. We observed dozens of Great Blue Herons hunkered down on the island, as well as many species of gulls flying above the river by the hundreds.

Our hike down the Mason Dixon Trail that parallels the river was cut short, as the river had overrun its banks flooding the trail in one area. Our bypass on the adjoining Lower Susquehanna Heritage Greenways Trail enabled us to observe the old stone Stafford-Clint Furnace that is undergoing renovations. Our group was treated to a phenomenal up-close sighting of a bald eagle eating a fish as it perched on a large lower branch just to the side of the trail on our way back to our vehicles. We also saw many signs of beavers along the trail. We were thrilled with our eagle count at the end of the outing – 38 eagle sightings between the 10 of us. Just before we left, we heard the eagles' loud, squeaky cackling as they began roosting in pairs later in the day. Warm bowls of soup at the affordably priced Delta Diner on the way home topped off an already great day.

Conowingo Dam is considered one of best places east of the Mississippi River to view Bald Eagles since the birds are nearly always present in good numbers, especially December through February, and viewing conditions are excellent, with the sun behind observers all day throughout the year. The trip takes about an hour and a half from our area, and I highly recommend you check it out.



## Report of the **SATC** Nominating Committee

In accordance with the Bylaws of the Susquehanna Appalachian Trail Club, Inc., the Nominating Committee, appointed by the President, submits the following slate of nominees for your consideration to serve during the next two years (2011-2013), commencing on April 1<sup>st</sup>.

Directors: Trisha Sanders  
Laura Sheely  
Rick Stahl

The election will take place at the annual meeting during the banquet on Friday, March 25, 2011. In accordance with the Bylaws, any member desiring to submit additional nominations may do so by submitting the nomination, in writing, to any member of the Nominating Committee so as to reach the member of the Committee by March 18, 2011. Nominations may not be made or accepted from the floor at the meeting.

At the writing of this report, the Nominating Committee has been unable to identify an **SATC** member willing to assume the currently vacant office of vice-president for the club; the present term of this office will expire on March 31, 2012. Since, this is a vacancy in an unexpired term, a candidate for this office may be appointed by the **SATC** Board at any time. The Nominating Committee welcomes suggestions for VP candidates and can answer your questions about the duties involved in this office. This is a great opportunity for an **SATC** member to fulfill an important leadership role in our club and carry on the legacy of **SATC**.

Respectfully submitted,  
The **SATC** Nominating Committee

Lorrie Preston, Chair  
[mitandpak@aol.com](mailto:mitandpak@aol.com)  
717-732-5615

Mike Barlup  
[jmbarlup@pamedsoc.org](mailto:jmbarlup@pamedsoc.org)

Dick Martin  
[HIKEMARTIN@aol.com](mailto:HIKEMARTIN@aol.com)

### ***SATC*** Receives **L.L. Bean** Grant from the Appalachian Trail Conservancy (ATC)

**SATC** was awarded a grant from the ATC to assist in the club's maintenance and management of the Appalachian National Scenic Trail ("A.T."). The funds were used for the rehabilitation of the Peter's Mountain parking lot, located between Dauphin and Halifax on PA-225. Over 30 volunteers from **SATC** and Norfolk Southern Railroad worked on the project, spreading new stone, repainting the fencing, cleaning out vegetation and removing dead trees. The club is an affiliate member of the ATC, which is the private nonprofit federation of hiking clubs, individuals and corporate members responsible for the management and protection of the A.T.

Funding for the grant came from the "L.L. Bean Grants to A.T. Clubs" program, which is providing more than \$22,500 this year for projects along the A.T. Since 1979, the ATC has awarded more than half a million dollars in grants from this program to support Appalachian Trail clubs.

As 1 of 31 A.T. clubs, **SATC** is responsible for maintaining 21 miles of the Appalachian Trail.

### ***Be an A.T. Information Center Volunteer***



In order to assist hikers, tourists, and townspeople at the Boiling Springs office (MARO), volunteers willing to devote a 4-hour shift on weekends & holidays are needed. In the 22 days covered in 2010, nearly 1,000 persons were recipients of the cheerful greetings and information offered during 200 hours of service. So what's the "job" description?

**DIRECTORS** - Pointing out the direction to food, re-supply and other things vital to hikers. The Mid-Atlantic Office in Boiling Springs is open on weekends to help the many hikers who pass through from May to September.

So volunteer to "sit on the porch" this summer at MARO by calling John Luthy at (717) 258-5771 or write to John [jluthy@appalachiantrail.org](mailto:jluthy@appalachiantrail.org).

## **SATC Trailmaster Report by Jeff Buehler 2010 Volunteer Hours Report**

Each year, Appalachian Trail (A.T.) maintaining clubs like the **SATC** report the total number of volunteers and volunteer hours spent on stewardship of the A.T. to the Appalachian Trail Conservancy (ATC) which has overall delegated responsibility for management of the trail. The ATC compiles and reports the totals to our federal agency partner, the National Park Service (NPS) who administers this national scenic trail.

All hours for field work and time spent traveling to and from work sites are to be reported annually. Examples of field work that benefit the A.T. include trail construction and maintenance on A.T. side trails, trail facilities construction, and maintenance such as shelters, privies, and parking areas, NPS corridor-boundary monitoring and maintenance; and monitoring threatened and endangered species and managing invasive plants. These are all volunteer activities in which **SATC** participates.

In addition to all the field work hours, clubs can also report A.T.-related administrative work, club communications and administration, public outreach, and training sessions and workshops. Some of these activities include work on local management plans, trail assessments, regional partnership committees, board meetings, newsletters and websites, chainsaw and first aid certification, and leading A.T. hikes. **SATC** has many different volunteers involved in various trail activities which require many reportable volunteer hours.

**SATC** volunteers engaged in A.T.-related activities under the NPS *Volunteers in the Parks (VIP)* national program. ATC and the NPS have a VIP agreement that protects ATC and the clubs from personal and trail club liability and provides reimbursement for medical expenses for accidents resulting from certain A.T. management activities. In addition, an accurate count of volunteer hours helps ATC compete for a significant amount of NPS funding.

Since all volunteer hours are ultimately reported to the NPS, a federal agency, the numbers reported here from **SATC** are for the federal fiscal year beginning Oct 1, 2009, and ending Sept 30, 2010.

### **Number of volunteers – 60**

|             |  |
|-------------|--|
| <b>948</b>  | <b>Number of field work hours</b>        |
| <b>286</b>  | <b>Additional travel hours</b>           |
| <b>769</b>  | <b>Additional hours (administrative)</b> |
| <b>2003</b> | <b>Total VIP hours</b>                   |

## **SATC “Program” & “Hospitality” Committees**

In order to more evenly distribute duties for the good of SATC, 2 new committees have been organized. The Program Committee will focus on bringing interesting and engaging programs and/or entertainment to our membership meetings and club gatherings. The Hospitality Committee will focus on being sure we are well-fed when we do get together, whether at our regular membership meetings, the holiday party, annual banquet, or summer picnic.

Now volunteers are needed to help make these committees work! Lorrie Preston has agreed to chair the Program Committee, but is looking for people to help develop ideas for programs (*suggestions are welcome from all SATC members!*) and share in the communication and coordination involved.

**A Chairperson for the Hospitality Committee is still needed**, as well as other volunteers to assist the chair to be sure refreshments are provided at membership meetings as well as our social gatherings throughout the year. The Hospitality Committee will solicit covered dishes from our members for the picnic and holiday party and assign preparation of meats or main courses to willing members. They will be sure we have enough volunteers on hand to set up and clean up after our events. The committee will also select the menu for the annual banquet.



Need further details on these opportunities or want to help our club by joining one of these committees, please contact Lorrie Preston at [mitandpak@aol.com](mailto:mitandpak@aol.com) or 732-5615 or President Karen Balaban at [KMBalaban@BalabanLLC.com](mailto:KMBalaban@BalabanLLC.com). Thank you!

### **Weed Warriors Unite!**

It's that time again! The ground warms up, the sun comes out and then up they pop - those vigorously growing invasive plants from Japan, China, and other far reaches of the world! **SATC** will once again attempt to keep these opportunistic thugs from continuing to take over sections of the trail that are still relatively clear of invasive plants.

Want to be involved in this effort or be notified of Weed Warrior outings for this spring? Please contact Lorrie Preston to be included in future Weed Warrior e-mail correspondence. More volunteers could lead weed-pulling outings of their own. An outing is planned for Sunday, May 1<sup>st</sup>, so we hope you will join us. See hike schedule for details. Bring work gloves, if you have them, and any pruners or tools you find useful. [mitandpak@aol.com](mailto:mitandpak@aol.com) or 732-5615 for more info.

**SATC Day at the A.T. Museum – May 22nd;  
Guest Greeter Needed**

Sunday, May 22 is **SATC** Day at the new A.T. Museum in Pine Grove Furnace State Park, as part of the weekly Sunday afternoon programming that the museum is sponsoring this year.

**SATC** members Nancy Stawitz and Craig Barnhart will present a program about our hiking club at 1:00 p.m. in hopes of spreading the word about who we are and what we do, and hopefully we will attract some new members in the process.

We have been asked to provide at least one additional **SATC** member as a greeter/volunteer inside the museum that afternoon from 12:00 noon to 4:00 p.m. This person would identify themselves as an **SATC** member by wearing a club t-shirt and/or name badge and would be greeting visitors alongside two experienced museum greeters. All that would be needed is to be there with an enthusiastic smile and be willing to interact with museum visitors and answer questions about **SATC**, if they arise. As a regular greeter at the museum last year, I promise you it will be lots of fun! Please contact Lorrie Preston at [mitandpak@aol.com](mailto:mitandpak@aol.com) or 732-5615 if you are willing to be the guest greeter on May 22<sup>nd</sup>.

**SATC Spotlight:  
Bill Holly and Anne Holly**



This quarter our spotlight trail maintainers are Bill Holly and his daughter Anne Holly. Their first work trip was in the spring of 2009 when Anne was 14 and in the 8th grade.



Anne attends Roland Park Country School in Baltimore and is required to complete a minimum of 60 hours of community service. Anne chose working with **SATC** because she had developed a

keen interest in the Appalachian Trail during her summers at camp in northern New England. Since Anne is a minor she needs to be accompanied by an adult on **SATC** work trips, so she and her dad (Bill) have found an unexpected opportunity to spend the day together, working hard, getting dirty and being free from all the distractions of the 21<sup>st</sup> century. Bill loves spending the day with his daughter but he is not sure about his teenage daughter's perspective.

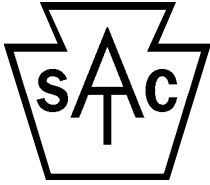
On SATC work trips, Anne's role is to carry tools on the hike to the work site and then dig out smaller rocks which are used for support, backfill, and drainage for the larger rocks which create rock bars and check dams. Anne's favorite tool is "baby sledge" which is used to break up small rocks. She also enjoys raking, shoveling, and spreading leaves.



Bill and Anne say that their specialty on work trips is having a lot of fun. They both have enjoyed repairing the Cold Spring Trail which is now BEAUTIFUL. They also enjoy laying down some turnpike near the Yellow Springs section of the AT.

They also have enjoyed learning from Jeff Buehler and the other hard working volunteers about trail construction and local history. The members of the crews have been very enthusiastic and supportive of Anne's interest and they always ask why she can't recruit other girls in her class to wake up early and come out for a hard day's work.

Bill says usually parents drag along their children to activities that interest them, but Anne has dragged her dad along to allow her to pursue her passion of helping to maintain the Appalachian Trail for the next generation. Anne loves learning about the trail as well as spending time on it. We hope to see you all out on the next work trip! It will be fun!! Keep on hiking, maintaining, and being trail angels!



**Susquehanna Appalachian Trail Club**  
**Hiking and Activities Schedule**

**Next Deadline to Submit Hikes for the Bushwack Bulletin: May 1, 2011**

E-Mail to Nancy Stawitz & Craig Barnhart at [nancy.stawitz@verizon.net](mailto:nancy.stawitz@verizon.net)

Download a Hike-Scheduling Form at <http://www.satc-hike.org/hikeldr.html>

Please **Call** Hike Leader in Inclement Weather or if You Desire to Meet at an Alternate Site

Always **Bring** Water and Snacks or Lunch. **Wear** Boots unless Otherwise Noted

**See** Page 13 for General Hike Information and Code Explanations

Please **Check** our Website for Updates (Changes, Additions, Deletions) to this Schedule

| <u>Dates &amp; Times</u>  | <u>Codes</u>                                       | <u>Hikes and Activities</u>   |
|---|--|---|
| <u>March 6</u><br>Sunday<br>1:00 PM   | P: Moderate<br>T: Rugged<br>L: 6<br>20 hwy miles   | <b><u>SATC Peters Mountain Shelter</u></b> Hike into the club shelter and return, bring snacks and water. <b>MEET</b> at Soldiers and Sailors Grove (entrance to the State Library). <b>Leader:</b> Susanne Donmoyer, 717-545-5308  |
| <u>March 12</u><br>Saturday<br>9:00 AM  | P: Moderate<br>T: Strenuous<br>L: 8<br>0 hwy miles | <b><u>Stone Tower Trail</u></b> This is a great hike with a few challenges. We will cross a stream using a cable, hike over a boulder field, and hike up and down two mountains, perhaps stop in and say "Hello" to the General. Bring a dry pair of socks. <b>MEET</b> at parking area for A.T. on PA-325. <b>Leader:</b> Jennifer Hollinger, 570-734-3056, <a href="mailto:jjhol57@aol.com">jjhol57@aol.com</a>   |
| <u>March 12</u><br>Saturday<br>11:00 AM   | P: Moderate<br>T: Rugged<br>L: 7<br>0 hwy miles    | <b><u>Aircraft Crash Site Near Pine Grove Furnace State Park</u></b> Starts at the parking area near Camp Michaux near Pine Grove Furnace SP and has a destination of an aircraft crash area. The first two miles are on the Appalachian Trail (2 miles south from the parking area). Then we follow a short side trail for about half a mile, then bushwhack for about a quarter mile. <b>MEET</b> at the Furnace parking lot. <b>Leader:</b> Rick Goodman, 717-697-2353, <a href="mailto:wa3usg@verizon.net">wa3usg@verizon.net</a>   |
| <b><u>March 13</u>      <b>2:00 am</b>      <b>Daylight Savings Time Begins – Turn your clocks forward one-hour</b></b> |  |   |
| <u>March 13</u><br>Sunday<br>9:00 AM  | P: Moderate<br>T: Rugged<br>L: 8<br>16 hwy miles   | <b><u>Hammer Creek to Middlecreek Wildlife Management Area</u></b> This shuttle hike leaves Hammer Creek via Horseshoe Trail, crosses three mountains and Sedlock Road before arriving at Middlecreek Wildlife Management Area. We may catch a glimpse of the beautiful tundra swans and snow geese in flight, and may tour the Middlecreek visitor center. Binoculars and camera optional. <b>MEET</b> Quentin Sunoco, intersection of PA- 2 and PA-419 in Quentin, Pa. <b>Leaders:</b> Tom Weaber (717) 272-2378, Joyce Kunkle (717) 866-6856 or <a href="mailto:kunklejd@comcast.net">kunklejd@comcast.net</a> |
| <u>March 17</u><br>Thursday<br>10:00 AM   | P: Moderate<br>T: Easy<br>L: 3<br>0 hwy miles      | <b><u>Wildwood Park Loop</u></b> Hike around Wildwood Park. <b>MEET</b> at the Olewine Nature Center parking lot. <b>Leader:</b> Susanne Donmoyer, 717-545-5308   |

March 19  
Saturday  
9:00 AM



**Trail Work Trip** Location to be determined by leader. Bring lunch and plenty of water. Wear old clothes and boots. Tools and safety gear are provided. For more information contact leader. **MEET** at Funck's Restaurant (rear parking area) in Indiantown Gap (exit 85, I-81). We will drive to nearby Memorial Lake SP and carpool to the trail. **Leader:** Jeff Buehler, 657-8281, [AThikerJB@aol.com](mailto:AThikerJB@aol.com)

March 19  
Saturday  
7:00 PM

P: Moderate  
T: Rugged  
L: 3.5

**Full Moon Hike on Blue Mountain** Say goodbye to winter on a hike from Miller's Gap on the Darlington Trail west to the Blue Mountain overlook on the Appalachian Trail for an outstanding nighttime view of the Cumberland Valley below. On the way back to Miller's Gap we will stop at the Darlington Shelter for a snack. Bring a small flashlight. **MEET** at the PA-114 park and ride area just north of I-81 Exit 57- Mechanicsburg. **Leader:** Rob Shaw, 350-5120, [jake17011@yahoo.com](mailto:jake17011@yahoo.com)



4 hwy miles

March 20  
Sunday  
2:00 PM

P: Brisk  
T: Rugged  
L: 5

**Little Buffalo Loop** Hike around Little Buffalo SP. Some inclines on first half, then easy walk through wooded area and over dam. **MEET** at Little Buffalo Conservation Center. **Leader:** Trisha Sanders, 717-580-7731, [ilvprple31169@yahoo.com](mailto:ilvprple31169@yahoo.com)

0 hwy miles

March 23  
Wednesday  
8:30 AM

P: Brisk  
T: Rugged  
L: 6.3

**Welcome Spring Hike: PA-850 to Scott Farm** One long uphill and downhill on Blue Mountain, thru the PA-944 underpass, then mostly level along the creek. Optional lunch after. Rain date – Tuesday, March 29. **MEET** at Scott Farm, Bernheisel Bridge Rd, Mechanicsburg. **Leader:** Lorrie Preston, 732-5615, [mitandpak@aol.com](mailto:mitandpak@aol.com)

10 hwy miles

March 25  
Friday  
6:30 PM

SATC Annual  
Banquet

**SATC Banquet at the Appalachian Brewing Company.**  
Brewery Tour 6:00pm and Dinner at 6:30pm  
See p. 15 for more details.

March 26  
Saturday  
8:00AM

P: Moderate  
T: Strenuous  
L: 10

**Standing Stone Trail: US 522 to Cowans Gap State Park (Part 3 of SATC series)** This hike traverses new trail created within the last 2 years for the southern terminus of the SST. Includes one long climb to ridgeline; total vertical ascent is 1,500+/- feet. Includes several overlooks, an uncompleted railroad, and the lake at Cowans Gap. **MEET** at the Hoss's Steakhouse parking lot on US-11 just west of the PA Turnpike exit in Carlisle. **Leader:** Karen Balaban, (717) 232.3708 (weekdays only), [KMBalaban@BalabanLLC.com](mailto:KMBalaban@BalabanLLC.com)

100 hwy miles  
+ turnpike toll



March 27  
Sunday  
12:30 PM

2-C-8  
3-C-12  
0 hwy miles

**SATC Directors Installation – Hawk Rock**  
Join us on hike to install 3 SATC Directors for 2011-2012. Option B is to continue hiking the Cove Mountain ridge along the A.T. with 2 climbs up Little and Blue Mountains, ending at Millers Gap. **MEET** at A.T. trail head in Duncannon. Hike **Leader:** Karen Balaban, 232-3708 (week days only) [KMBalaban@BalabanLLC.com](mailto:KMBalaban@BalabanLLC.com)

April 1  
Friday  
Sunrise

Werk Trip

**Stone Sauna Assembly** Build the grand-daddy of all A.T. bare containment basins. Volunteers will hike to Boo-Boo Bear Vista. **MEET** at naturist colony on Podunk Creek. **Leader:** Yogi Bear 717-555-5555 [aprilfool@gotcha.net](mailto:aprilfool@gotcha.net)

April 2  
Saturday  
9:00 AM



**Trail Work Trip** Location to be determined by leader. Bring lunch and plenty of water. Wear old clothes and boots. Tools and safety gear are provided. For more information contact leader. **MEET** at Funck's Restaurant (rear parking area) in Indiantown Gap (exit 85, I-81). We will drive to nearby Memorial Lake SP and carpool to the trail. **Leader:** Jeff Buehler, 657-8281, [AThikerJB@aol.com](mailto:AThikerJB@aol.com)

April 2  
Saturday  
9:00 AM

Program

**Hike Leader and Safe Hiker Program** This program provides advice and recommendations for leading hikes and hiking safely. It is free to all SATC and CVATC members, but you **must register by Friday, March 18**. Contact Craig Barnhart, 761-6864, [craigbarnhart@verizon.net](mailto:craigbarnhart@verizon.net), Nancy Stawitz, 770-0569, [nancy.stawitz@verizon.net](mailto:nancy.stawitz@verizon.net).

April 3  
Sunday  
9:00 AM

P: Moderate  
T: Rugged  
L: 11.4

5 hwy miles

**A.T. from Swatara State Park to PA-501** From Swatara State Park the AT gradually ascends for 1 mile to the top. Next 5 miles follows the crest of Blue Mountain with some rock navigation. We'll stop at Wm. Penn Shelter for lunch then cross PA-645, east to Kimmel Lookout, to the PA-501 parking lot. **MEET** at Hess Station, Lickdale, Pa. at intersection Interstate 81(Exit 85A). **Leaders:** Joyce Kunkle (717) 866-6856 or [kunklejd@comcast.net](mailto:kunklejd@comcast.net), Tom Weaber (717) 272-2378

April 9  
Saturday  
9:00 AM

P: Moderate  
T: Rugged-  
Strenuous  
L: 8.7  
30 hwy miles

**Cove Mountain - Hawk Rock** Hike the A.T. over Cove Mountain to Hawk Rock. **MEET** at Sovereign Bank (Boscov's) at Camp Hill Shopping Center. **Leaders:** Fran Theis, 761-0176, [ftheis@reynoldsconstruction.com](mailto:ftheis@reynoldsconstruction.com); Lee Casher, 652-3906, [xrsizer41@hotmail.com](mailto:xrsizer41@hotmail.com)

April 10  
Sunday  
1:30 PM

P: Moderate  
T: Rugged  
L: 6

0 hwy miles

**Wolf's Hollow County Park Loop** Spring leaves may be budding as we hike thru hollows and ridges in Chester County's newest park. Located on the Lancaster-Chester County line, this tract was a land grant from William Penn in 1681. Combined hike with BMECC. **MEET** at parking lot, 150 Wolf's Hollow Dr., Atglen, PA. **Leader:** Margaret Fuoco, 610-779-8393, [margaretfuoco@verizon.net](mailto:margaretfuoco@verizon.net)

April 13  
Wednesday  
10:00 AM

P: Moderate  
T: Easy  
L: 3  
0 hwy miles

**Wildwood Park Loop** Hike around Wildwood Park in Harrisburg. **MEET** at the Olewine Nature Center parking lot. **Leader:** Susanne Donmoyer, 717-545-5308

April 16  
Saturday  
8:00 AM

P: Brisk  
T: Strenuous  
L: 16

0 hwy miles

**A.T. Clarks Ferry Bridge to PA-325** Fast paced hike on the ridge of the A.T. on Peters Mountain. Bring lunch. Hike leader will consider allowing a hiker to do a shorter section if anyone is interested - Clarks Ferry Bridge to PA-225 (7-miles) or PA-225 to PA-325 (9 miles). You might need to provide your own shuttle. **MEET** at PA-325. **Leader:** Jennifer Hollinger, 570-734-3056, [jihol57@aol.com](mailto:jihol57@aol.com)

April 16  
Saturday  
9:00 AM



**Trail Work Trip** Location to be determined by leader. Bring lunch and plenty of water. Wear old clothes and boots. Tools and safety gear are provided. For more information contact leader. **MEET** at Funck's Restaurant (rear parking area) in Indiantown Gap (exit 85, I-81). We will drive to nearby Memorial Lake SP and carpool to the trail. **Leader:** Jeff Buehler, 657-8281, [AThikerJB@aol.com](mailto:AThikerJB@aol.com)

April 17  
Sunday  
9:00 AM

P: Moderate  
T: Rugged  
L: 8

6 hwy miles

**Mt Gretna Loop** Departs PA-72 by Horseshoe Trail, crosses through game lands, around and through Mt. Gretna, taking time to visit Clarence Schock Environmental Center before hiking up to Governor Dick tower for a splendid 360° view of the area and then returning to PA-72 trail head. Hike can be extended at participants' request. Wear good hiking boots. **MEET** at Quentin Sunoco at intersection of PA-72 and PA-419, in Quentin, Pa. **Leaders:** Tom Weaber (717) 272-2378, Joyce Kunkle (717) 866-6856 or [kunklejd@comcast.net](mailto:kunklejd@comcast.net)

April 23  
Saturday  
10:00 AM


P: Brisk  
T: Strenuous  
L: 8  
0 hwy miles

**A.T. The Pinnacle and Pulpit Rock** Difficult 900 foot climb in beginning and rock scrambles across ridge on A.T. Email leader for more details or questions. **MEET** at Hamburg Reservoir parking area (A.T.). **Leader:** Trisha Sanders, 717-580-7731, [ilvprple31169@yahoo.com](mailto:ilvprple31169@yahoo.com)

April 23 & 24  
Saturday &  
Sunday  
8:00 AM

P: Moderate  
T: Rugged  
L: 9 & 10  
150 hwy miles

**A.T. Hike across Maryland (Part 2): Greenbriar State Park to Penn-Mar**  
A two-day hike on the northern half of the Appalachian Trail in Maryland. Meet in the Mechanicsburg area and carpool down to the AT parking lot on US 40. Bring food and camping gear for the night for Saturday night at the Ensign Cowell AT shelter. We will leave the gear needed for the overnight in a car parked near the shelter. **MUST PRE-REGISTER** with the hike leader by April 1, 2011. Not interested in camping? Make your own reservation to stay at the Free State Hiker Hostel <http://www.freestatehiker.com/>. **Leader:** Jim Foster, 717-649-5505, [jimhfoster@yahoo.com](mailto:jimhfoster@yahoo.com)

|  |                                    |  |
|--|------------------------------------|--|
| <u>April 28</u><br>Thursday<br>6:30 PM | Quarterly<br>Membership<br>Meeting | <p><b><u>Quarterly Membership Meeting @ Giant Community Center (Harrisburg)</u></b></p>  <p>Bring a guest and join us for a half-hour social time with refreshments followed by a presentation on the Capital Area Greenbelt trail by Norm Lacasse. Bring your list of hikes for the summer schedule. Location: Giant Food Store, 2300 Linglestown Road, Harrisburg, 2nd Floor.<br/>Contact: Tara Shade, 319-6975, <a href="mailto:tjshade23@yahoo.com">tjshade23@yahoo.com</a></p> |
|--|------------------------------------|--|



**SPRING TURKEY SEASON APRIL 30 - MAY 31, 2011**  
**DO NOT** wear red, blue, black or white. These are the head colors of a male wild turkey. **AVOID** wearing a red or blue handkerchief, and blue jeans.  
**Be safe - wear florescent orange.**

April 30  
Saturday  
8:00 AM

P: Moderate  
T: Rugged  
L: 11  
120 hwy miles


**Standing Stone Trail: Rocky Ridge Natural Area to PA-655 (Part 4 of SATC series)** This hike traverses the lower side of Stone Mountain. Includes a State Natural Area, sinkholes, wildflowers and stretches with fascinating rock outcrops. The hike will follow planned relocations of the trail this year, so there will be light bushwhacking. **MEET** at the commuter parking lot off US 322 at the Route 225 north / Dauphin exit, but use the Water Gap spur on the exit, turn left at the stop sign at ramp end to lot on the left. **Leader:** Karen Balaban, (717) 232.3708 (weekdays only), [KMBalaban@BalabanLLC.com](mailto:KMBalaban@BalabanLLC.com)

April 30  
Saturday  
2:00 PM



P: Moderate  
T: Easy  
L: 5  
20 hwy miles

**A.T. Bluebell Walk** Appalachian Trail from Scott Farm to PA-944 and return. Virginia Bluebells are typically in bloom on this weekend. **MEET** at Carlisle Commons, Carlisle, PA near Cinemas 8 theaters. Exit from I-81 at Carlisle Exit 47, PA-34 North. Go north on PA-34 to the traffic light at Noble Blvd and turn left. Proceed to the second stop sign. Turn left into the mall parking lot. Meeting place is between the theaters and Noble Blvd. **Leader:** Frank Bohn, 717-234-5169

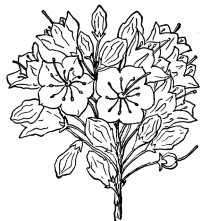
May 1  
Sunday  
9:00 AM



**Trail Work Trip** Location to be determined by leader. Bring lunch and plenty of water. Wear old clothes and boots. Tools and safety gear are provided. For more information contact leader. **MEET** at Funck's Restaurant (rear parking area) in Indiantown Gap (exit 85, I-81). We will drive to nearby Memorial Lake SP and carpool to the trail. **Leader:** Jeff Buehler, 657-8281, [AThikerJB@aol.com](mailto:AThikerJB@aol.com)

- May 1  
Sunday  
12:30 PM
- P: Moderate  
T: Rugged  
L: 5-6
- 50 hwy miles
- A.T. Weed Warrior Outing at PA-325** Hike north on the A.T. from the PA- 325, then pull garlic mustard and other invasives on our way back to the parking area. This is a lightly invasive-infested area that has been worked on in the past. Japanese Barberry in the parking area will also be targeted. **MEET** at parking area along Wertzville Rd, Enola, just east of the Rte 81 interchange at 11:30, or at PA-325 lot at 12:30. **Leader:** Lorrie Preston, 732-5615, [mitandpak@aol.com](mailto:mitandpak@aol.com)
- May 1  
Sunday  
1:00 PM
- P: Moderate  
T: Rugged  
L: 6
- 50 hwy miles
- A.T. Bluebell Hike: PA-850 to Scott Farm** Hike south on the Appalachian Trail from PA-850 to the Scott Farm. Two moderate climbs and one steep descent. Virginia Bluebells are typically in bloom on this weekend. **MEET** at Soldiers and Sailors Grove (entrance to the State Library). **Leader:** Frank Bohn, 717-234-5169
- May 8  
Sunday  
1:00 PM
- P: Leisurely  
T: Easy  
L: 2
- 16 hwy miles
- Kids Rock Opossum Lake** Join 4, 7 and 8-year old hike leaders and their parents to hike part of the trail around temporarily empty Opossum Lake near Carlisle and see what is being done to replace the leaky dam. Forested path includes hills, a bridged stream crossing or two and could be wet in places. This will be an in-and-out hike with options for longer or shorter distances. Please, a responsible adult must supervise each child. Others willing to travel at a child's pace welcome. Bring water and snacks. **MEET** at Carlisle Commons between movie theaters and street (250 Noble Blvd.). **Leaders:** Kelly and Hannah Barker, 249-6727 and Laurel Fleszar, 583-2093
- 
- May 12  
Thursday  
5:45 PM
- P: Moderate  
T: Strenuous  
L: 5
- 0 hwy miles
- After Work Hike: Victoria Trail-Whitetail Loop** Hike up over Peters Mountain ridge to Ibberson Conservation area and back. **MEET** at PA-225/PA-325 (Dauphin) parking lot (If we're lucky, we'll see some lady's slippers!) **Leaders:** Lee Casher, 652-3906, [xrsizer41@hotmail.com](mailto:xrsizer41@hotmail.com); Fran Theis, 761-0176, [ftheis@reynoldsconstruction.com](mailto:ftheis@reynoldsconstruction.com)
- May 14  
Saturday  
12:00 PM (noon)
- P: Leisurely T: Rugged  
L: 3+
- 0 hwy miles
- Victoria Furnace & the Bayard Estate** Walk in the woods while listening to a brief history of the area by family member Catherine Sourbeer then walk to explore the area. Dress for the weather & to be IN THE WOODS! **MEET** at the Victoria Trail parking lot on PA-325. **Leaders:** Sharon Shellenberger 249-6575, [sharonshellenberger@gmail.com](mailto:sharonshellenberger@gmail.com), Catherine Sourbeer
- May 15  
Sunday  
9:00 AM
- 
- Trail Work Trip** Location to be determined by leader. Bring lunch and plenty of water. Wear old clothes and boots. Tools and safety gear are provided. For more information contact leader. **MEET** at Funck's Restaurant (rear parking area) in Indiantown Gap (exit 85, I-81). We will drive to nearby Memorial Lake SP and carpool to the trail. **Leader:** Jeff Buehler, 657-8281, [AThiker.JB@aol.com](mailto:AThiker.JB@aol.com)
- May 15  
Sunday  
9:30 AM
- P: Brisk  
T: Strenuous  
L: 7
- 0 hwy miles
- Hike with the Great Eastern Trail Board** Strenuous loop hike on the Mid State/Great Eastern and other trails around the west side of Little Pine State Park. Meet the Great Eastern Trail Board which is meeting in nearby Woolrich. Slight variation of <http://midatlantichikes.com/midstate-lp.htm> **MEET** at main parking lot by stone bathrooms, Little Pine State Park, Waterville PA. **Leader:** Peter Fleszar, 717 576-3112 cell, [gis@hike-mst.org](mailto:gis@hike-mst.org)

May 15  
Sunday  
1:00 PM



P: Leisurely to Moderate  
T: Easy to Rugged  
L: Option A - 2.2 or Option B - 6.5  
0 hwy miles

**Wildflower & Mountain Laurel Program & Hike – A.T. Museum** This half-hour program will help you to identify wildflowers along the A.T., learn their bloom times and locations for special sightings. Followed at 1:30 with a hike north on A.T. through Pine Grove Furnace SP. Hike will be divided into 2 sections for various hiking abilities. First 1.1 miles on level trail will include wildflower and nature observation, then co-leader, Nettie Parson, will take some participants back to parking area. Lorrie will continue to lead people who can hike more-rugged terrain up Piney Mtn to Pole Steeple side trail & overlook where we should see Mtn. Laurel in bloom. **MEET** at the A.T. Museum, Pine Grove Furnace State Park. **Leader:** Lorrie Preston, 732-5615, [mitandpak@aol.com](mailto:mitandpak@aol.com), Nettie Parson

May 15  
Sunday  
1:00 PM



P: paddle 2 mph  
T: Water Trail  
L: 11.5 miles  
0 hwy miles

**Kayak/Canoe Yellow Breeches** Paddle the beautiful Yellow Breeches Water Trail ending at the New Cumberland Borough Park. **MEET** at the Liberty Forge Mini Golf Course area on Lisburn Rd. Every vessel MUST have a current registration sticker and EVERYONE must wear a PFD! **Leader:** Sharon Shellenberger 249-6575, [sharonshellenberger@gmail.com](mailto:sharonshellenberger@gmail.com)

May 18  
Wednesday  
5:30 PM

P: Brisk  
T: Rugged  
L: 4  
0 hwy miles

**Clarks Ferry Sunset Hike** 400 foot climb early in the hike, rock scrambles across ridge, and then a beautiful view of Clarks Ferry Bridge as the sun sets on the Susquehanna River. Hike will be canceled if rain. Call hike leader if unsure. **MEET** at US-322 exit PA-147 parking area. **Leader:** Trisha Sanders, 717-580-7731, [ilvprple31169@yahoo.com](mailto:ilvprple31169@yahoo.com)

May 21  
Saturday  
(Details on p. 14)

7:30 am  
8:30 am

**The Ironmaster's Challenge** (Pine Grove Furnace SP)  
P: Brisk T: Strenuous L: 26.6 miles  
**March for the Mansion** (Pine Grove Furnace SP)  
P: Moderate T: Rugged L: 9.7 miles



May 22  
Sunday  
9:30 AM

P: Moderate  
T: Rugged  
L: 12-14  
5 hwy miles

**PA-72 to Gold Mine Road** This shuttle hike gradually ascends on a rocky trail to the summit, then down to Rausch Gap, on to Cold Spring Vista, dropping down to Cold Spring Station, continuing a "figure eight" by returning to Rausch Gap then back to Gold Mine Road via Upper Stage Coach Trail. This is a delightful hike with a lot of variety. We'll be hiking with Batona Club. **MEET ONLY** at Hess Station, Lickdale, Pa., PA-72 or Exit 85A of Interstate 81. **Leaders:** Tom Weaber (717) 272-2378, Joyce Kunkle (717) 866-6856 or [kunklejd@comcast.net](mailto:kunklejd@comcast.net)

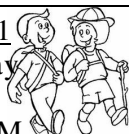
May 22  
Sunday  
Noon to 4pm



**SATC Day at the A.T. Museum** Come to Pine Grove Furnace SP and engage in an intriguing day of fun, activities, and history. For more details, please **Contact:** Craig Barnhart, 761-6864, [craigbarnhart@verizon.net](mailto:craigbarnhart@verizon.net) or Nancy Stawitz, 770-0569, [nancy.stawitz@verizon.net](mailto:nancy.stawitz@verizon.net).

**PA HIKING WEEK – Saturday May 28<sup>th</sup> through Sunday June 5<sup>th</sup>**

May 31  
Tuesday  
6:00 PM



P: Leisurely  
T: Easy  
L: 1  
0 hwy miles

**Wildwood Lake Boardwalk** Join 4, 7 and 8 year old hike leaders and their parents to explore nature around Wildwood Lake. Others willing to travel at a child's pace are welcome. Bring binoculars if you have them. **MEET** at the Nature Center parking lot. [www.wildwoodlake.org](http://www.wildwoodlake.org). **Leaders:** Laurel Fleszar, 583-2093; Kelly and Hannah Barker, 249-6727.

## Hike Description Codes

### P-T-L Codes (Pace, Terrain and Length/Mileage)

#### Pace Codes

|                  |   |
|------------------|---|
| <b>Leisurely</b> | Nature or historical walk; frequent stops for observation |
| <b>Moderate</b>  | Steady, 1 to 2 miles per hour (mph)                       |
| <b>Brisk</b>     | Steady, 2 to 3 mph  |
| <b>Fast</b>      | 3 to 4 mph; very short breaks; a workout                  |

#### Terrain Codes

|                            |  |
|----------------------------|--|
| <b>Paved</b>               | Solid pavement/sidewalk  |
| <b>Easy</b>                | Soft ground / sand / carriage trails; nearly level; few rocks / roots / obstructions   |
| <b>Rugged</b>              | Some rocks / roots / obstructions / unbridged stream crossings possible; climbs and descents totaling up to 1000 feet possible   |
| <b>Strenuous</b>           | Steep hills, rocks / roots / obstructions / unbridged stream crossing likely; frequent climbs and descents totaling more than 1,000 feet   |
| <b>Extremely Difficult</b> | - Usually more than 12 miles; some or all of these features possible or likely: rocks / roots / obstructions / unbridged stream crossings; non technical rock climbing / scrambling; bushwhacking; climbs and descents totaling well over 1,000 feet |

Length/Mileage Estimated by hike/event leader

### GENERAL HIKE INFORMATION



**1. TRANSPORTATION** The hike leader may determine the amount required to reimburse drivers for rides between the meeting places and trail head. If you ride with someone, please reimburse the driver the amount specified. General Rule: Please give the driver *10 cents* times the highway mileage.

**2. REGISTRATION** All hikers must register (sign in) with the hike leader at the meeting place or at the trailhead before starting any scheduled hike. Some hikes require advance registration with the hike leader. Please check the schedule for this request.

**3. PACK IN, PACK OUT (LEAVE NOTHING BEHIND)**

**4. SMOKING GUIDELINES** SATC prefers that hikers refrain from the use of tobacco products during Club activities. Smokers are individually responsible for damage to the forests.



***Dog-Friendly Hike\**** Join us on the Loyalsock Trail near Crystal Lake on Saturday April 30<sup>th</sup> and Sunday May 1<sup>st</sup> with a possible overnight stay in a very rustic cabin with 4 bunk beds – first come, first served. Info at <http://www.lycoming.org/alpine/>. For more details and the meeting place, please contact Craig Barnhart, 761-6864, [craigbarnhart@verizon.net](mailto:craigbarnhart@verizon.net), Nancy Stawitz, 770-0569, [nancy.stawitz@verizon.net](mailto:nancy.stawitz@verizon.net).

\*This is not an SATC sanctioned or sponsored event



#### ***Obituary: Melvin Line***

**SATC** member Melvin L. Line 70, Carlisle, died Monday, Aug. 30, 2010 in the Carlisle Regional Medical Center. Mel was a US Army veteran. He also helped to maintain the Appalachian Trail in Cumberland County and volunteered with the start-up of the A.T. Museum. He was the owner of Line's Office Supplies, Carlisle, since 1972. Prior to owning the office supply store, he was the office manager of the former Cumberland Valley Savings and Loan's Shippensburg Office. Many thanks to those who have honored Mel's wishes with their generous memorial donations to **SATC**.

**Green C.A.U.S.E. To Help Environment** The Mechanicsburg Adult Environmental Club, active since 2004, is expanding its reach to become part of a new umbrella organization **GREEN C.A.U.S.E.** (Capital Area United to Serve the Environment). **C.A.U.S.E.** is a new organization that will connect municipal green organizations in Cumberland, Dauphin, Lancaster, Lebanon, Perry, and York Counties to facilitate the sharing of information, to promote green living and green business, and to provide education about good stewardship practices that improve and maintain our water, air, and earth.

The vision is that each community within a 20 mile radius of Harrisburg will host an environmental club under the umbrella of Green CAUSE. If you are interested in organizing an environmental club in your own community, want to know if a club already exists, or need more information, please contact Paul Garrett: (717) 737-2554 or [paulgarrett40@comcast.net](mailto:paulgarrett40@comcast.net).

**Update: The Ironmaster's Mansion Over 4,300 volunteer hours donated** Volunteers have donated their time, talent, resources and tools to help restore the Ironmaster's Mansion at Pine Grove Furnace SP. Students from Arbor scraped and painted shutters, Norfolk Southern employees cut and pulled weeds, **SATC** and other trail club members removed invasive plants, assisted with landscaping, and painted. A dedicated group of Lowe's Heroes spent countless hours providing technical expertise, direction and hands-on support. The sidewalk has been installed, native plants are now waiting for spring to show us their glory and we are working on our final phase of fundraising to install the kitchen appliances. CPC truly thanks all of the volunteers for their outstanding efforts to help open the Ironmaster's Mansion on April 1<sup>st</sup>! There's still more to do, so if you are interested in volunteering or making a donation, please contact Debbie Bowman at 717-645-5873 or [dbowman@centralpaconservancy.org](mailto:dbowman@centralpaconservancy.org)

Don't forget to sign up now for "**The Ironmaster's Challenge**" ("IC") and the "**March for the Mansion**" ("M4M") to be held on **Saturday, May 21<sup>st</sup> in Pine Grove Furnace State Park** and in the surrounding Michaux Forest. The length of the IC is 26.6 miles and the M4M is 9.7 miles. They are both supported hikes providing several checkpoints to gauge your progress with each stop providing water, energy drinks, and various snacks. First aid and radio communications services will also assure that safety-first is maintained.

The registration fee includes a free t-shirt and a fulsome picnic at the conclusion of the event on the Ironmaster's Mansion grounds. Register now

[www.ironmasterschallenge.com](http://www.ironmasterschallenge.com). Volunteers will also be invited guests for the festivities. Registration form for the March for the Mansion (only) is on page 17.

Contact Karen Balaban (717) 232-3708  
[KMBalaban@BalabanLLC.com](mailto:KMBalaban@BalabanLLC.com)

### **Wildlife Conservation Officers**

In the wake of the tragic shooting death of WCO David Grove, of Adams County, in November, it is important to understand the critical role played by these law enforcement officers in Pennsylvania. **SATC's** section of the Appalachian Trail as well as the Darlington Trail both travel through state game lands.

Wildlife protection is conducted by a force comprising about 200 full-time Wildlife Conservation officers and more than 500 Deputy Wildlife Conservation Officers. A full-time officer's area of responsibility is about 350 square miles; deputies help patrol it. Wildlife Conservation officer duties include: enforcing [hunting](#) and trapping laws to protect [wildlife](#); investigating hunting accidents; conducting wildlife surveys; assisting in wildlife research projects; and providing educational programs. Officers are uniformed and have received extensive law enforcement and wildlife management training.

All full-time officers are graduates of the Game Commission's Ross Leffler School of Conservation, America's first game protector or warden school. More than 500 officers have graduated from the school since it was established in 1936.

Wildlife Conservation officers are empowered to enforce the Game and Wildlife Code, Fish and Boat Code, Forestry Laws and Pennsylvania's Crimes Code; they also frequently assist local and state police, especially in rural areas. Officers have been involved in missing person searches, guiding police in remote wilderness areas and drug eradication programs. Officers also provide assistance in emergency responses to accidents and disasters.

The next time you meet a WCO, don't hesitate to thank him for protecting our natural resources.

### **KTA Welcomes New Staff Member**

Please welcome Shanna Filizzi to KTA as its new Program Administrator. Shanna may be reached at [ktadmin@verizon.net](mailto:ktadmin@verizon.net) 717-238-7017. She replaces Becky Schreiber who is thru-hiking the A.T. this summer with her partner Andrew Tice (no trail names yet!).



Find [SATC on Facebook](#)



## 2011 SATC Annual Meeting and Banquet



Appalachian Brewing Company, Inc.  
50 N. Cameron Street, Harrisburg PA 17101  
Phone 717-221-1080  
[www.abcbrew.com](http://www.abcbrew.com)

**Friday, March 25<sup>th</sup> 6:30 pm** upper level rear banquet room (A complimentary brewery tour, for up to 25 participants, begins at 6:00 PM in the lower level)

Banquet will include election of **SATC** Officers and Directors, awards, presentations, and a featured speaker.

**Menu** - The buffet style meal includes:

- Haddock piccata, Penne pasta with vegetables in white wine sauce, Meat lasagna, Green beans, Mashed potatoes, Caesar salad, Dinner rolls
- Kids meal: Chicken tenders & French fries
- Soft drinks excluding craft soda, coffee and tea station
- Cookie & brownie trays

**Price** **Early bird discount** if postmarked or received by March 10<sup>th</sup>  
Adult - **\$18** Children under 10 years old - **\$6**

Late registration – call first – space limited  
Adult **\$23** Children under 10 years old - **\$10**

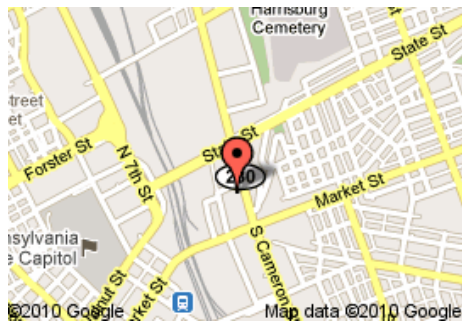
**RSVP** Please use the Membership Application at the back of this publication and send your payment to the address shown on the form by **March 10<sup>th</sup>**. If you need to renew your membership, please include your membership dues with your banquet payment. You will not receive a ticket. Names will be checked at the door.

**Door Prizes** Obtain a ticket at the door for a chance at receiving one of a variety of Door Prize gifts.

### Featured Presentation

#### **Civilian Conservation Corps 101: What the CCC did for the People of PA and the USA.**

This historical presentation given by John Eastlake includes numerous black and white photos from the Pennsylvania CCC camps. Learn some very cool facts about the role PA played during the CCC era of the 1930s. Don't miss it.



#### **Directions to the Banquet**

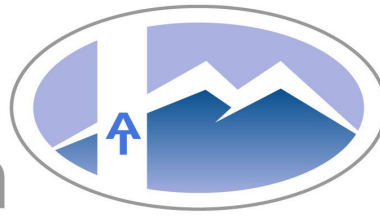
From I-83: Take the 2nd Street exit. Turn right at the 1st light (Paxton Street). Turn left at the next light (Cameron Street). Go through the next light (Market Street). Look for the 3 story brick building on the left hand side (corner of Cameron and Walnut).

From I-81: Take the Cameron Street exit. Go about 1 mile past the Farm Show Complex. Look for the 3 story brick building on the right hand side (corner of Cameron and Walnut).

From the West Shore: Take the Market Street Bridge over the Susquehanna River. Take Market Street past the Railroad Station to the next light (Cameron Street). Go left onto Cameron Street and look for the 3 story brick building on the left (corner of Cameron and Walnut).

**For More Information** Please contact: Rick Sis at (717)774-0197 [hike-hbg@satc-hike.org](mailto:hike-hbg@satc-hike.org)

# Appalachian Trail Museum



## **A.T. Museum to Begin its Second Season**

The Appalachian Trail Museum will open for its second season on April 2, 2011, operating on weekends only through Memorial Day. It will then be open DAILY between Memorial Day and Labor Day, and in the fall, again weekends only until late October or early November. Hours of operation are noon to 4 p.m., with extended hours during special events at the park. Special museum events and programs will be offered throughout the season.

The museum opened in June 2010 at Pine Grove Furnace State Park, in Gardners, PA, near the mid-point of the Appalachian Trail. In its first season, the museum received nationwide publicity for its grand opening, attracted more than 8000 visitors from 48 states and 13 countries, and hosted several special programs. None of this would have been possible without the efforts of the dedicated individuals who spent uncounted hours renovating the historic mill building that houses the museum and the equally dedicated group who spent more than 1000 hours staffing it during operating hours.

Just as the Appalachian Trail depends upon the efforts of its many and varied volunteers for continued maintenance and protection, the A.T. Museum needs a growing core of dedicated volunteers to build upon its initial success to expand exhibits and programming. Volunteer opportunities include docents to staff the museum, programs committee, building and grounds maintenance, collections cataloging, and fundraising.

Volunteering at the museum is a lot of fun, and a great way to make new friends, give something back to the community, learn more about the things that interest you, and share stories and experiences with others. Please consider helping in one of the capacities listed here, and share the list with your spouses, relations, and friends.

To volunteer, contact [atmuseumgreeters@gmail.com](mailto:atmuseumgreeters@gmail.com)

Our website is [www.atmuseum.org](http://www.atmuseum.org).

**Save the Date – SATC Annual Picnic  
Tuesday, July 19<sup>th</sup>  
Creekview Park, Hampden Township**

## **Deadline Nearing for Appalachian Trail Hall of Fame Nominations**

Hikers and hiking enthusiasts nationwide have until Thursday, March 31, to submit nominations for the first inductees into the Appalachian Trail Hall of Fame.

"We have been very pleased with nominations so far, but we want to make sure we do not miss someone because a nomination is not received on time," said Jim Foster, chairman of the Appalachian Trail Hall of Fame Committee. "Those eligible for consideration include anyone who has made a major contribution to the Appalachian Trail, or otherwise has advanced the cause of the Appalachian Trail."

The Appalachian Trail Hall of Fame, established by the Appalachian Trail Museum Society, recognizes those who have made a significant contribution toward establishing and maintaining the 2,181 mile footpath that passes through 14 states from Maine to Georgia.

Nomination criteria, include, without limitation, pioneers who conceived of and developed the trail; those who organized or directed major trail organizations like the Appalachian Trail Conservancy and the Appalachian Trail maintaining clubs; longtime trail maintainers; leaders who promoted and protected the Appalachian Trail; hikers who have made significant accomplishments, and other persons who have enriched the culture or community of the Appalachian Trail by their association with it. Nominations may be submitted at <http://www.surveymonkey.com/s/63PYPCT>

## **2011 ATC Biennial Conference**

Will be held at Emory and Henry College, in southern Virginia, from July 1-8. Hikes will take place on the A.T. and various side trails from a few miles south of Watauga Lake in Tennessee to a few miles north of I-77 in Virginia. There will also be hikes on trails in several state and local parks. Hikes vary in difficulty from easy (2-5 miles) to very strenuous. A complete list of planned hikes and registration information may be found on the Conference's website.



Registration opens March 1st! [www.virginia2011.org/](http://www.virginia2011.org/)

**MARCH FOR THE MANSION – 9.7 miles**

**REGISTRATION FORM**

**Saturday, May 21, 2011, 8:30 AM**

|   |                      |           |
|---|----------------------|-----------|
| Name:   |                      |           |
| Street:   |                      |           |
| City:   | State:               | Zip:      |
| Phone Number:   | Email <sup>1</sup> : |           |
| Age on Event Day:   | Male[ ]              | Female[ ] |
| Please check each of the following that apply. Incomplete entries will be returned.   |                      |           |
| <u>I represent that</u><br>[ ] I am at least 16 years old.<br>[ ] I am physically fit and have sufficiently trained to complete this event.   |                      |           |
| <u>I understand that</u><br>[ ] I am expected to maintain at least a 1.5 mph pace for 6.5 hours during the <b>March for the Mansion</b> .<br>[ ] No pets are allowed on the <b>March for the Mansion</b> .<br>[ ] I must follow the rules of the event and the directions of the event officials. |                      |           |
| T-Shirt (Unisex Size) S[ ] M[ ] L[ ] XL[ ] XXL[ ] <b>OR</b><br>[ ] I don't need another t-shirt. Please donate cost to the Ironmaster's Mansion Restoration.  |                      |           |
| <b>Registration Fee:</b> Includes a light, cold breakfast, snacks and drinks at each checkpoint, celebration picnic at the finish and a t-shirt.  |                      |           |
| \$30 – <b>Early March for the Mansion</b> registration postmarked on or before April 25 \$ _____  |                      |           |
| \$40 – Registration for <u>March for the Mansion</u> postmarked between April 26-May 13 \$ _____  |                      |           |
| Extra contribution towards the restoration of the Ironmaster's Mansion \$ _____   |                      |           |
| <b>Total Enclosed</b> \$ _____  |                      |           |

**Release from Liability**

I am aware that there are inherent risks and dangers that may arise during the **March for the Mansion**. My participation is voluntary. I assume the responsibility for my own well-being while participating in the activities associated with this event and while traveling to and from the event as well as all other risks inherent in this event/activity. I release and hold harmless the Commonwealth of Pennsylvania, the Tumbling Run Game Preserve, the Susquehanna Appalachian Trail Club, the Central Pennsylvania Conservancy, the Keystone VHF Club and each of the aforementioned's officers, directors, members and all volunteers associated with this event/activity from any and all liability for any injury, loss or damage to my person or property, direct or consequential, arising from participation in this event/activity and the travel and transportation involved.

**All unsigned and/or incomplete entries will be returned.**

X

Signature (Parent or guardian signature if under the age of 18 on May 21, 2011) \_\_\_\_\_ Date \_\_\_\_\_

**Make checks payable and mail to:**

**Central Pennsylvania Conservancy**  
Attn: March for the Mansion  
401 E. Louthier Street, Suite 308  
Carlisle, PA 17013-2652

<sup>1</sup> Your email address will be used only in connection with the **March for the Mansion**. All communication by email will be by BCC (blind carbon copy)

\*\* You do not have to be a KTA member to participate in KTA activities or events.

**Join KTA at the Spring Hiking Weekend in Chester County**



The 2011 KTA Spring Meeting & Hiking Weekend will be held April 15-17, 2011 in West Chester, Chester County. Explore the fine hiking trails of southeastern Pennsylvania with local hike leaders from the Batona Hiking Club, Chester County Trail Club, Philadelphia Trail Club, Horseshoe Trail Conservancy and Wilmington Trail Club - a true collaboration to highlight the best trails in the area!

Lodging and meals will be available at the Microtel Inn & Suites in West Chester. See the KTA Winter Newsletter for details and the registration form or visit [www.kta-hike.org](http://www.kta-hike.org).

Mark your calendars for April 15-17, 2011, and join us in Chester County!

**KTA Announces 2011 Trail Care Program**

One of the most important and rewarding aspects of involvement with the Keystone Trails Association is the opportunity to help maintain Pennsylvania's hiking trails.

The KTA Trail Care program offers interested volunteers three types of "hands on" trail work opportunities - one-day Code Orange Trail Care events, Trail Care weekends and Trail Crew weeks. No prior experience is necessary. Volunteers of all ages are encouraged to attend. Tools, safety equipment, gloves, conviviality and mentoring provided. Volunteers are responsible for bringing all personal camping gear.

Please visit [www.kta-hike.org](http://www.kta-hike.org) for the complete Trail Care schedule.

**PA Hiking Week Celebrates Tenth Year: May 28 through June 5**

The Keystone Trails Association and the Pennsylvania Department of Conservation and Natural Resources (DCNR) are proud to sponsor the tenth annual Pennsylvania Hiking Week. This year's hiking week is scheduled for Saturday, May 28 through Sunday, June 5, which coincides with the Memorial Day weekend and National Trails Day (Saturday, June 4).

The statewide event promotes Pennsylvania's amazing network of hiking trails in state parks, state forests and communities throughout the commonwealth. The nine-day event typically features more than 100 organized hikes and walks throughout Pennsylvania. KTA thanks our local hiking clubs for organizing hikes and for providing hike leaders. Let's work to make the tenth Pennsylvania Hiking Week the best one yet!

Please consider scheduling a hike during Pennsylvania Hiking Week to feature your local trails. Look for additional information in the May 2011 Newsletter or contact [ktaadmin@verizon.net](mailto:ktaadmin@verizon.net) for details.

**Upcoming KTA Events**

|             |             |                                       |
|-------------|-------------|---------------------------------------|
| March 25-27 | Trail Care  | Mid State Trail, State College Region |
| April 2     | Code Orange | Keystone State Park                   |

April 15-17      Spring Meeting & Hiking Weekend, West Chester, Chester County

|                |             |                                |
|----------------|-------------|--------------------------------|
| April 29-May 1 | Trail Care  | Thunder Swamp Trail System     |
| May 7          | Code Orange | Gifford Pinchot State Park     |
| May 20-22      | Trail Care  | Thomas Darling Nature Preserve |

May 28-June 5      Pennsylvania Hiking Week, Statewide

|               |                    |                                |
|---------------|--------------------|--------------------------------|
| May 31-June 5 | Trail Crew Week #1 | North Country Trail            |
| June 7-12     | Trail Crew Week #2 | Mid State Trail, Tioga Region  |
| June 14-19    | Trail Crew Week #3 | Chuck Keiper/Donut Hole Trails |

For more information on the KTA Trail Care, Crew, & Code Orange programs, please visit [www.kta-hike.org](http://www.kta-hike.org).



# SATC MEMBERSHIP / RENEWAL & BANQUET RESERVATION FORM

Please check all applicable box(es):  New membership  Banquet Reservation  
 Renewal\*  Correction of membership details

*\*For membership renewals with no change in data, only enter dues payment, print name(s) and sign form.*

- Individual Membership \$15.00 \$ \_\_\_\_\_
- Joint Membership (at same address) \$25.00 \$ \_\_\_\_\_
- Life Membership \$375.00 for an individual membership; \$625.00 for joint membership \$ \_\_\_\_\_
- 55 years old & over** \$300.00 for an individual membership; \$500.00 for joint membership \$ \_\_\_\_\_
- Student Membership—*must be full-time, 18 years or older; include copy of current student ID; must receive all communications electronically; must be renewed annually* \$ 0

I would also like to contribute to support SATC's shelter maintenance and hiking trails. \$ \_\_\_\_\_

SATC Club Patch (\$2.00 plus .12 sales tax) \_\_\_\_ x \$ 2.12 = \$ \_\_\_\_\_

**Annual Banquet:** Postmarked by March 10<sup>th</sup>: \_\_\_\_ Adults @ \$18, \_\_\_\_ Children under 10 years @ \$6 = \$ \_\_\_\_\_

Postmarked after March 10<sup>th</sup>: \_\_\_\_ Adults \$23, \_\_\_\_ Children under 10 years @ \$10 = \$ \_\_\_\_\_

**Make checks payable to: SATC** **Amount Enclosed** \$ \_\_\_\_\_

**Send completed form and payment to: SATC, P.O. Box 61001, Harrisburg, PA 17106-1001**

Name (Print) \_\_\_\_\_ Joint Member Name \_\_\_\_\_

Address \_\_\_\_\_ City \_\_\_\_\_ State \_\_\_\_\_ Zip \_\_\_\_\_ - \_\_\_\_\_

Telephone (Home) \_\_\_\_\_ Telephone (Other) \_\_\_\_\_

E-mail \_\_\_\_\_ Occupation \_\_\_\_\_

Renewal Memberships:  Please send me the newsletter by e-mail.

New members will automatically receive a PDF file of the **Bushwack Bulletin** (the quarterly newsletter) and the (almost) weekly **SATC Trail Mail** (trail info, hike updates, news, and other items of interest to the hiking community) distributed by e-mail as a blind carbon copy. Your e-mail address will not be shared. E-mailed newsletters precede U.S Postal Service distribution by at least one week, contain color photos, and may include additional content.

I am not interested in e-mail distribution of the newsletter and Trail Mail. Please send the newsletter by USPS only.

I do **NOT** wish to be listed in the SATC Directory.  Please send me a membership card

Check if you are interested in assisting with any of the following activities:  Trail Maintenance  Invasive Plant Control  
 SATC-related activities & events  Hike Leader – Hike leaders are urged to attend SATC Membership Meetings.

**Payment of dues constitutes an agreement of those signing below with the policies of the SATC including the following liability statement and release:** I am / We are aware of the risks inherent in outdoor activities. By participating in any activity of SATC, I / We will be responsible for my / our own well being and that of my / our minor children while I / we are participating in the activities of SATC and while traveling to and from these activities. I / We agree that SATC, its officers, representatives, and volunteers shall not be liable for any injury, loss or damage to my / our persons, my / our children, or my/our property, direct or consequential, arising from SATC activities.

Signature \_\_\_\_\_ Date \_\_\_\_\_ Joint Member Signature \_\_\_\_\_ Date \_\_\_\_\_

**This application for membership MUST BE SIGNED AND DATED by all persons 18 years of age or older and all married persons below the age of 18 who belong or wish to belong to SATC under this membership.**

----- DO NOT WRITE BELOW THIS LINE ----- DO NOT REMOVE THE BOTTOM PORTION -----  
Processed by Treasurer \_\_\_\_\_ Processed by Database Manager \_\_\_\_\_ Dues Paid to April 1, \_\_\_\_\_  
Issue code 57



**Susquehanna Appalachian Trail Club**  
P.O. Box 61001  
Harrisburg, PA 17106-1001

**DATED MATERIAL**

**NON-PROFIT ORG.**  
U S POSTAGE  
**PAID**  
HARRISBURG PA  
PERMIT NO. 15

**RETURN SERVICE REQUESTED**

**Please send all changes of mailing address, phone number, and e-mail address to:**  
**SATC, P.O. Box 61001, Harrisburg, PA 17106-1001**  
E-mail: [hike-hbg@satc-hike.org](mailto:hike-hbg@satc-hike.org)